
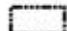




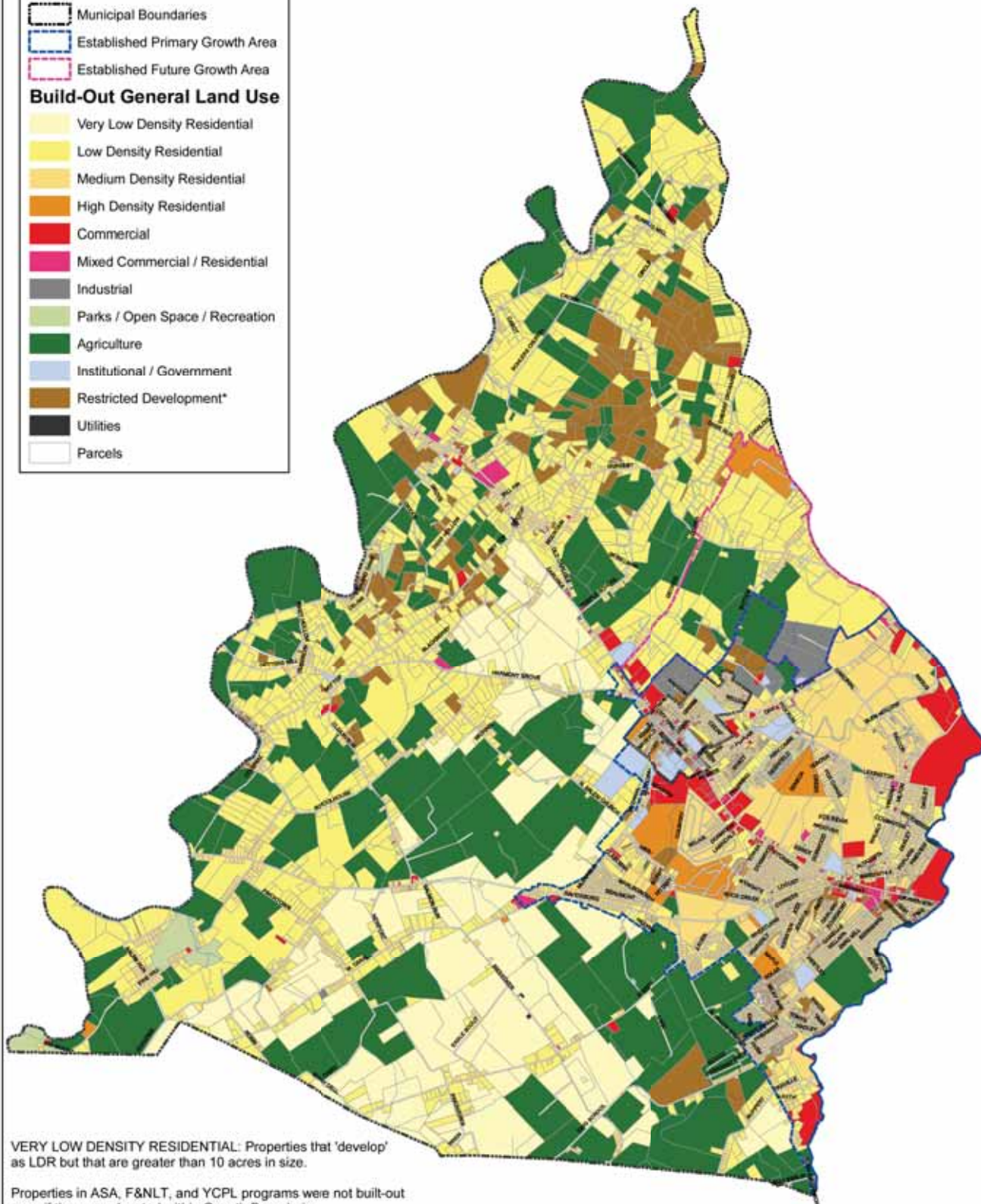
PROBABLE FUTURE UNDER CURRENT ZONING

Legend

-  Streams
-  Municipal Boundaries
-  Established Primary Growth Area
-  Established Future Growth Area

Build-Out General Land Use

-  Very Low Density Residential
-  Low Density Residential
-  Medium Density Residential
-  High Density Residential
-  Commercial
-  Mixed Commercial / Residential
-  Industrial
-  Parks / Open Space / Recreation
-  Agriculture
-  Institutional / Government
-  Restricted Development*
-  Utilities
-  Parcels



VERY LOW DENSITY RESIDENTIAL: Properties that 'develop' as LDR but that are greater than 10 acres in size.

Properties in ASA, F&NLT, and YCPL programs were not built-out even if they were located within Growth Boundaries.

*Restricted Development: Due to environmental constraints such as steep slopes, floodplains, wellhead protection areas, or wetlands, the parcels retained their current land use.



NOTES: Parcel data November 2005.
General Land Use categories based on JCPAC & Community input.

1 Inch = 4,500 Feet
RF 1:54,000
March 2006