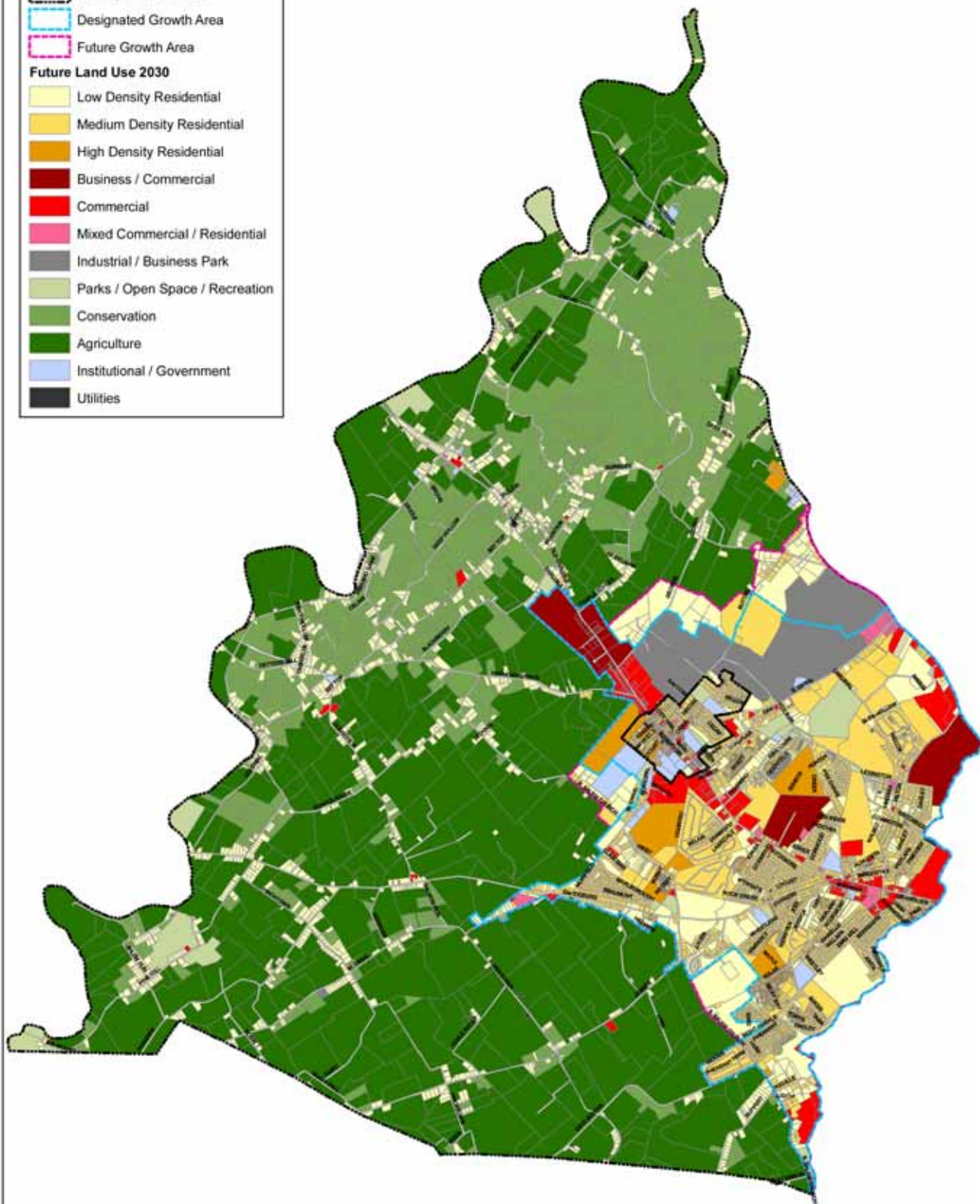


DEVELOPMENT PATTERNS 2030

Legend

-  Municipal Boundaries
-  Designated Growth Area
-  Future Growth Area
- Future Land Use 2030**
-  Low Density Residential
-  Medium Density Residential
-  High Density Residential
-  Business / Commercial
-  Commercial
-  Mixed Commercial / Residential
-  Industrial / Business Park
-  Parks / Open Space / Recreation
-  Conservation
-  Agriculture
-  Institutional / Government
-  Utilities



NOTES: Parcel data November 2005.  
General Land Use categories based on JCPAC & Community input.

1 Inch = 4,500 Feet  
RF 1:54,000  
April 2007

Source: Dover Borough, Dover Township, York County Planning Commission.

**DRAFT**

**MAP 2**