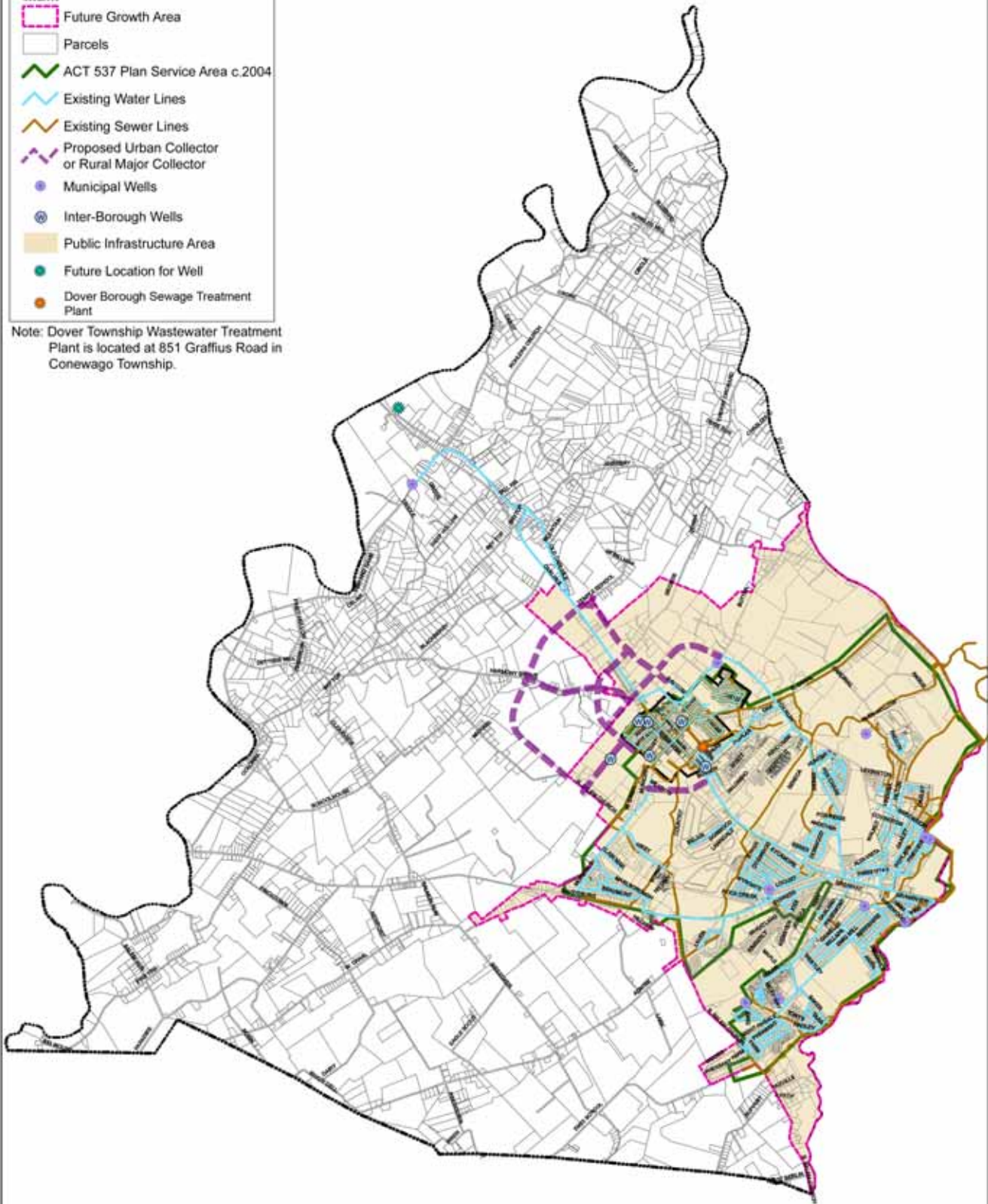


FUTURE WATER & SEWER FACILITIES PLAN 2030

Legend

-  Municipal Boundaries
-  Future Growth Area
-  Parcels
-  ACT 537 Plan Service Area c.2004
-  Existing Water Lines
-  Existing Sewer Lines
-  Proposed Urban Collector or Rural Major Collector
-  Municipal Wells
-  Inter-Borough Wells
-  Public Infrastructure Area
-  Future Location for Well
-  Dover Borough Sewage Treatment Plant

Note: Dover Township Wastewater Treatment Plant is located at 851 Graffius Road in Conewago Township.



NOTES:

1 Inch = 4,500 Feet
RF 1:54,000
April 2007