

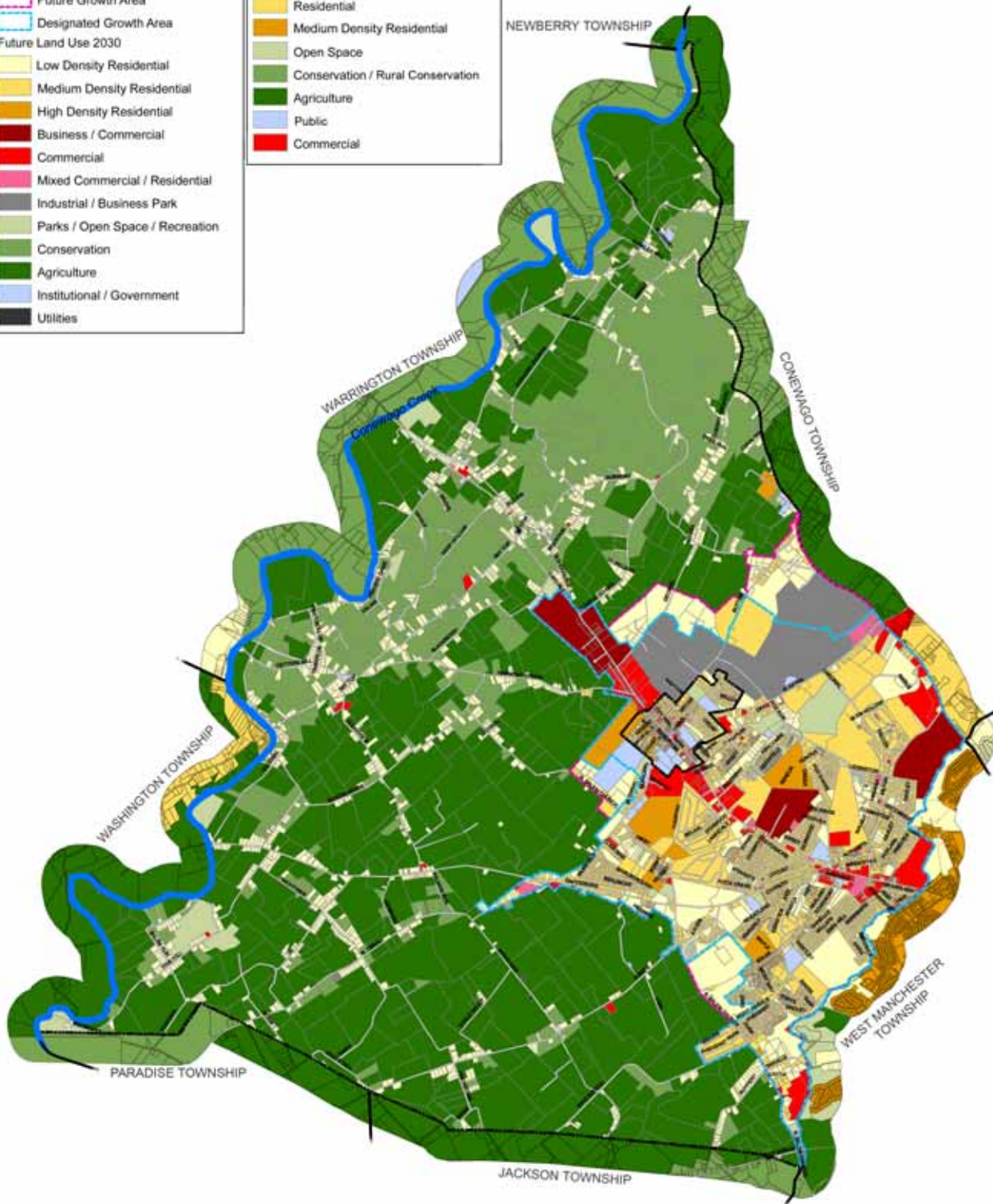
## DEVELOPMENT PATTERNS 2030 & SURROUNDING MUNICIPALITIES

### Dover Borough & Dover Township Legend

- Streams
- Municipal Boundaries
- Future Growth Area
- Designated Growth Area
- Future Land Use 2030**
- Low Density Residential
- Medium Density Residential
- High Density Residential
- Business / Commercial
- Commercial
- Mixed Commercial / Residential
- Industrial / Business Park
- Parks / Open Space / Recreation
- Conservation
- Agriculture
- Institutional / Government
- Utilities

### Surrounding Municipalities Legend

- Future Land Use**
- Agriculture Rural / Open Space Residential
- Residential
- Medium Density Residential
- Open Space
- Conservation / Rural Conservation
- Agriculture
- Public
- Commercial



NOTES: Parcel data November 2005.  
 General Land Use categories based on JCPAC & Community input.  
 Surrounding Municipalities Future Land Uses based on respective Comprehensive Plans.

1 Inch = 4,500 Feet  
 RF 1:54,000  
 April 2007